

An Introduction to  
The Oxford Science Park  
by  
Ian Macpherson  
Business Development Manager

Tel: +44 (0)1865 784006

[Ian.Macpherson@oxfordsp.com](mailto:Ian.Macpherson@oxfordsp.com)

# The Oxford Science Park

- History
- Description
- Companies on the Park
- Why the Oxford Science Park?

# Magdalen College



# Magdalen College Nobel Prize Winners

- Sir Charles Sherrington
- Dr. Erwin Shroedinger
- Lord Florey
- Sir Robert Robinson
- Sir Peter Medawar
- Sir John Eccles

# The Joint Venture Partners

Magdalen College  
The University of Oxford



&

Prudential Assurance  
Company Ltd



# Objectives of the Science Park

- To provide for a mixture of start-up companies and research departments of larger companies
- To allow for companies to grow on site
- To encourage Technology Transfer
- To provide different styles of architecture in a landscaped environment

# The Oxford Science Park

- History
- **Description**
- Companies on the Park
- Why the Oxford Science Park?



THE OXFORD  
SCIENCE PARK 

# Oxford Science Park

- Opened by the Prime Minister in 1991
- 75 acres – 30 Hectares
- Over 50 companies now located at the Park
- 34,000+ sq metres completed
- Total Capacity 65,000 sq metres

# The Stepping Stone Approach

- Magdalen Centre South
  - 15 – 250 sq m (1 person – 25 people)
  - 1 month licence agreements
- Magdalen Centre North
  - 250 – 1,100 sq m
  - 1 – 3 year lease agreements
- Medawar Centre
  - 500 sq m + (50 – 100 people)
  - 3 - 5 Year lease agreements
- Single buildings
  - Northbrook House 2600 sq m
  - The Hinshelwood Building 2900 sq m
  - 15 Year + lease agreements

# The Magdalen Centre Innovation Centre



- Purpose built 1991
- 1 month licence agreements
- 30 companies
- Social Centre

# Magdalen Centre South

## Inclusive Monthly licence fee

- Business rates
- Water rates
- Park Service charge
- Heating
- Lighting
- Cleaning of common areas
- Broadband Access
- Telephone line rental (pro rata)
- Full reception + back up telephone answering service
- Parking
- Security

# Magdalen Centre South

## Current Availability

- March 2003 -

Room	Sq ft	Sq metres	Cost per month*
F4.3	332	30	£1092.83
S6	760	70	£2501.67
T2	1290	119	£4246.25

Costs calculated on £39.50 per sq ft per year excluding VAT

# Magdalen Centre Extension



- For companies requiring 250 sq m +
- Suitable for offices or laboratories
- Space Available

# Florey House



- 3 floors of 700 sq m each
- Offices & laboratories
- PowderJect  
Pharmaceuticals HQ

# Medawar Centre



- Two linked buildings
- 6 floors of 500 sq metres each
- Offices & Laboratories
- Oxford BioMedica

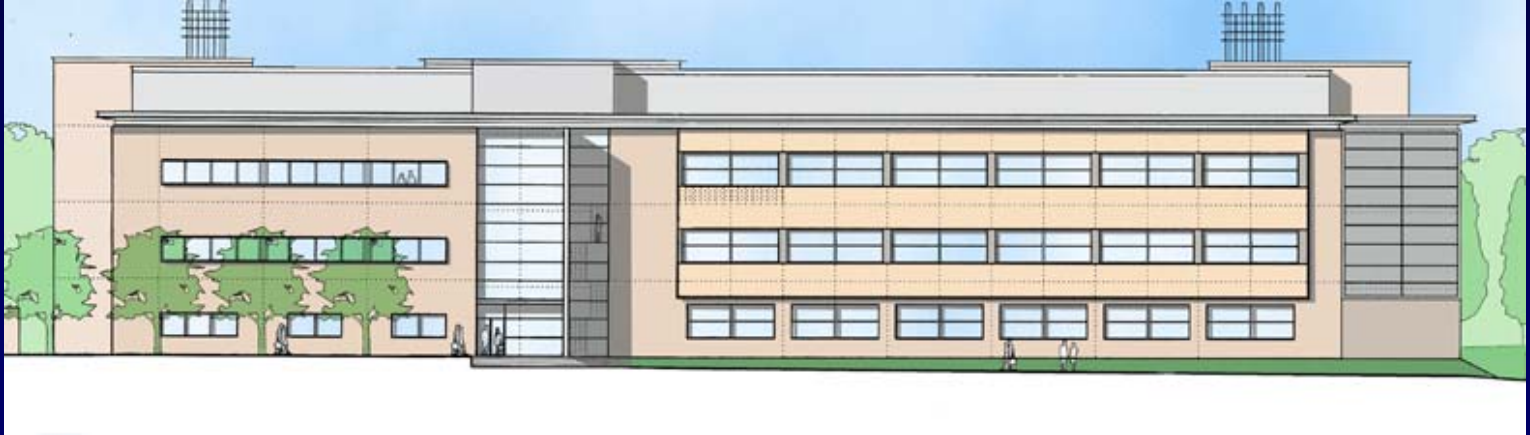
# Northbrook House



# Sharp Laboratories of Europe



# The Future – Plot 18



- Approx 4000 sq m
- 3 storey
- Multi-tenanted laboratory building
- Planning permission received

# The Oxford Science Park

- History
- Description
- Companies on the Park
- Why the Oxford Science Park?

# Companies on the Park

view at - [www.oxfordsp.com](http://www.oxfordsp.com)

- [Angiogene Pharmaceuticals](#)
- [Boult Wade Tennant](#)
- [Commerce Decisions](#)
- [COMSOL](#)
- [Dunotech](#)
- [Earth Energy Engineering](#)
- [Electrosols](#)
- [E'San](#)
- [EU Biotech Developments](#)
- [Evolutec](#)
- [Fishawack](#)
- [Foundation Network](#)
- [General Technologies](#)
- [InforMax](#)

- [J.A. Kemp & Co](#)
- [Labflex](#)
- [Network Pharma](#)
- [Numbercraft](#)
- [Oxford BioMedica](#)
- [Oxford BioSignals](#)
- [Oxford Nursery](#)
- [Oxford Optronix](#)
- [Oxford Technology Venture Capital Trust](#)
- [Oxford Therapeutics](#)
- [PharmaVentures](#)
- [PMIS Consulting](#)
- [Phynova](#)
- [Physiomics](#)
- [PowderJect Pharmaceuticals](#)

- [Santec](#)
- [Serologicals](#)
- [Sharp Laboratories of Europe](#)
- [Simply Automate](#)
- [SKY Computers](#)
- [Software 2000](#)
- [SOPRA Group](#)
- [Spectra Logic](#)
- [Sterix](#)
- [Telelogic UK](#)
- [Thames Valley Technology](#)
- [TUT Systems](#)
- [Vecta Software Corporation](#)
- [Vistorm](#)
- [Zipcom](#)

# Companies by size (employment)

- 1 – 5 employees 47%
- 6 – 15 employees 22%
- 16 – 50 employees 24%
- 51 – 120 employees 7%

# Companies by Industry sector

- Computer hardware /software/  
/ telecomms 42%
- BioScience 50%
- Other 8%

# Overseas companies on the Park

•SOPRA	France
•Dunotech	Korea
•EU Biotech Developments	Korea
•InforMax	USA
•Labflex	Denmark
•Santec	Japan
•Sharp Laboratories of Europe	Japan
•SKY Computers	USA
•Telelogic UK	USA
•TUT Systems	USA

# The Oxford Science Park

- History
- Description
- Companies on the Park
- **Why the Oxford Science Park?**

# Why the Oxford Science Park?

## 1. Customers and visitors

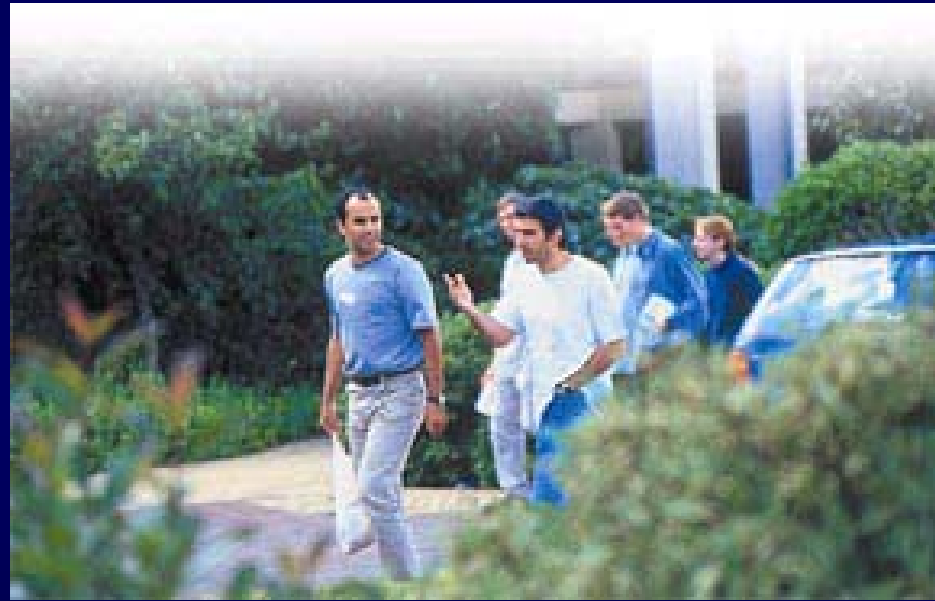
- Professional business environment
- Internationally recognised location
- Easy access and Parking
- Airports & Motorways



# Why the Oxford Science Park?

## 2. Recruitment

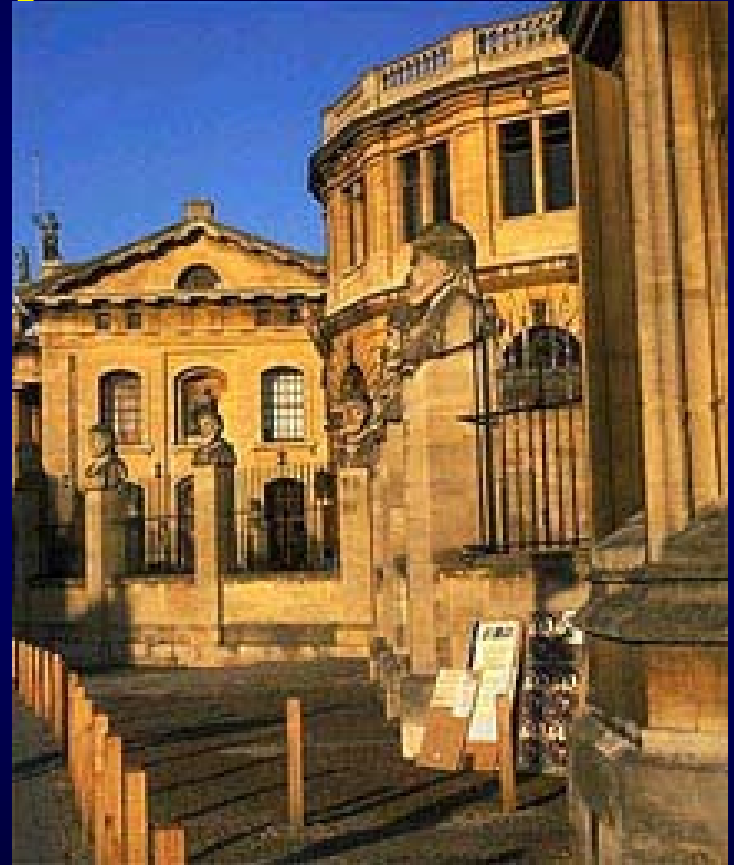
- Local pool of skilled personnel
- Attractive location
- Easy access and Parking
- 2003 – Kassam Stadium - Fitness Centre, Leisure Facilities and Cinema Complex



# Why The Oxford Science Park?

## 3. Technology transfer

- University of Oxford
- Research Hospitals, Oxford
- Brookes University,
- Synchrotron @ Rutherford
- Appleton Laboratory, JET
- Fusion project
- Companies on the Park & in Oxfordshire



# Why the Oxford Science Park?

## 4. Local Support Infrastructure

- Local High Tech Clusters & Networks

  - Bioscience, ICT, Lasers & Optics, Medical Equipment

- Professional Infrastructure

  - Patent Agents, Solicitors, Venture Capital Co's, Business Angels, Accountants, Mentoring Services

# Why the Oxford Science Park?

## 5. The Development Partners

- Flexible start-up lease agreements
- Opportunities for expansion



# Summary

- Excellent location for Customers and other visitors
- Excellent location for recruitment purposes
- Opportunities for technology transfer
- Local support infrastructure
- Attractive lease agreements and opportunities for expansion from the Joint Venture Partners
- An attractive City & County in a central UK location

[www.oxfordsp.com](http://www.oxfordsp.com)